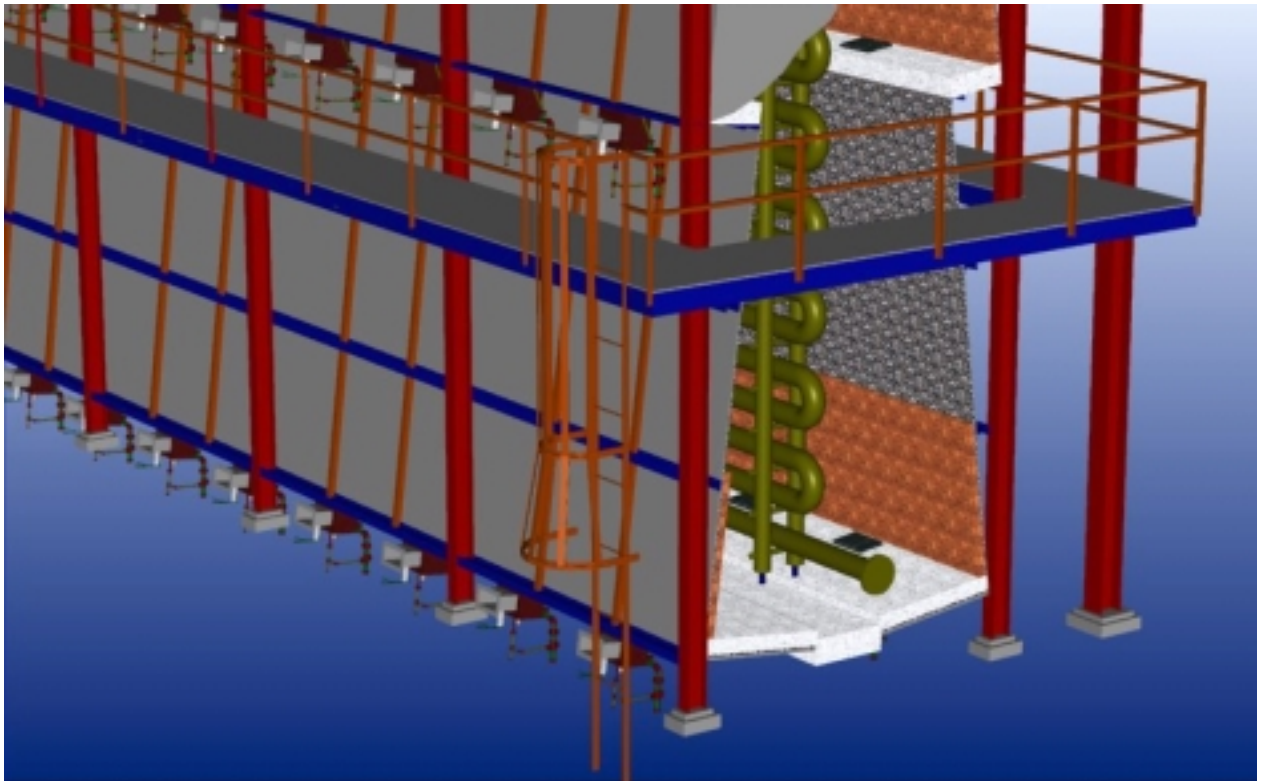


**ETHYLENE DICHLORIDE (EDC)  
CRACKING FURNACE WITH  
TERRACE-WALL™ TECHNOLOGY**



*Reliability*  
*Flexibility*  
*Ease of Maintenance*  
*Greater Control*

# Foster Wheeler EDC Cracking Furnace with TERRACE-WALL™ Technology

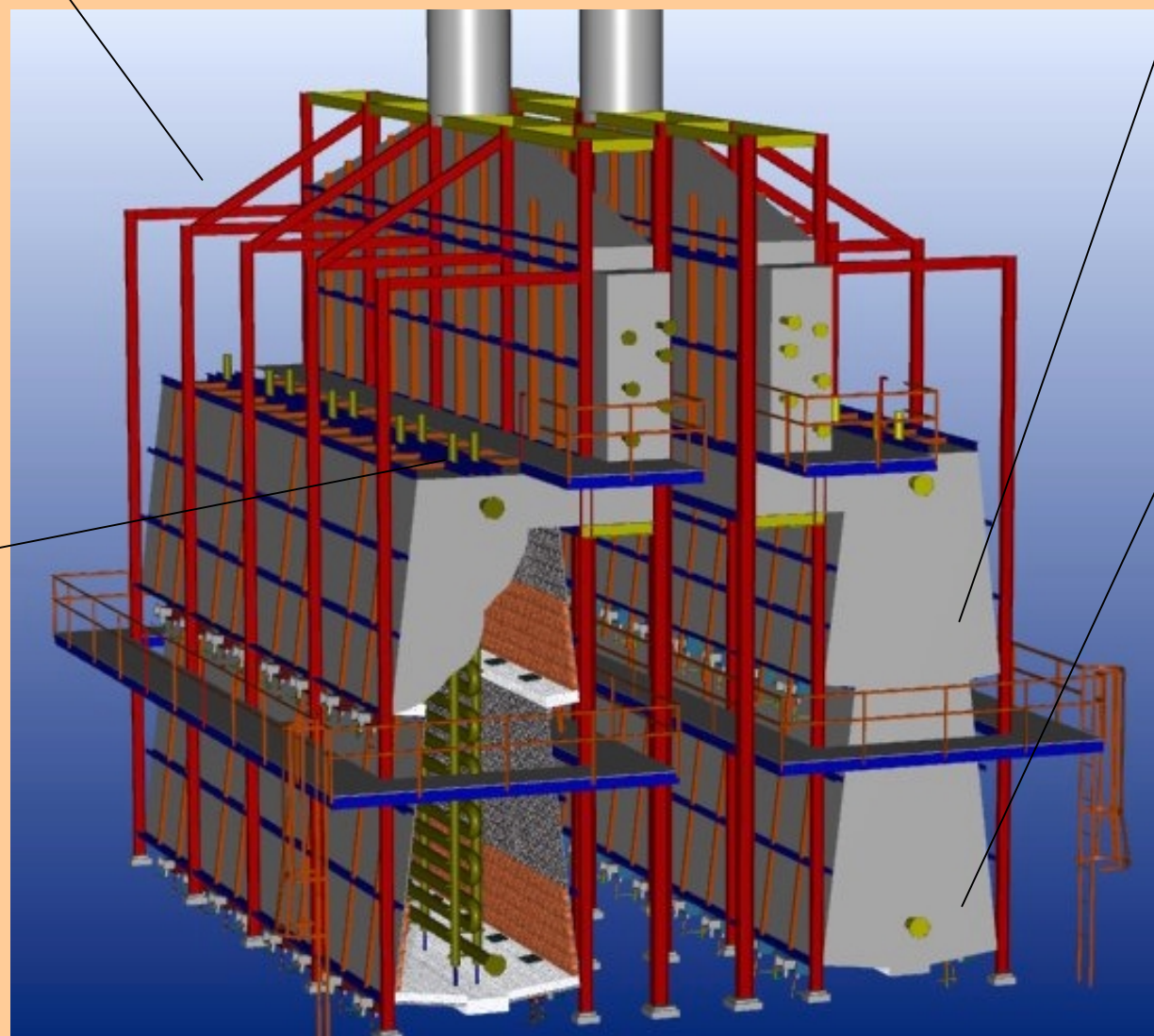
## Quality, Reliability, and Flexibility

### Offset Convection Section: Efficient, Cost-Effective Radiant Coil Installation and Replacement

- Lift and insert prefabricated coil assemblies from topside of the radiant section.
- Continuous opening along the radiant arch for easy access to coils and supports.
- Reduce coil change-out time from weeks to days.
- Fast-track or accelerate construction despite long lead-time radiant coil delivery. Build the unit and drop the coils in when available.

### Top-Supported Radiant Tube Stanchions For Long Operating Life

- Hung from the top, guided at the bottom—stanchions are in tension, not compression.
- Stanchions designed for high temperature performance.
- Reduced cross-sectional area means less weight and less cost.
- Easily install or remove stanchions from the top, one set or all.

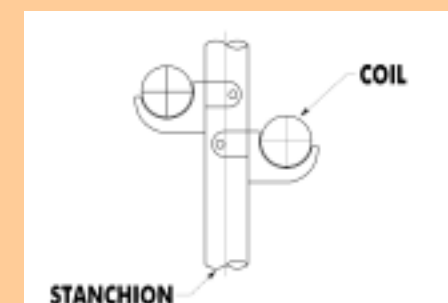


### Re-radiation and Zoned Firing Produces Uniform Heat to the Radiant Coil

- Uniform heat input and zoned firing achieves consistent product yield by eliminating unexpected localized cracking.
- Provides greater control over the cracking process to suit your particular feedstock.
- Eliminates hot spots, decreasing coke formation in the radiant coil and increasing coil run life.

### Fewer Burners: Reduced Maintenance and Increased Operational Flexibility

- Only one-third of the burners compared to a traditional EDC cracker.
- Less effort required to start-up and maintain burner equipment.
- Easy and cost-effective addition of zoned firing controls.
- Handles a wide range of liquid and gas fuels safely and efficiently.
- A simplified arrangement of headers and feeders for forced-air system installation.



Single or Double Radiant Coil  
Arrangement: Customized to Meet  
Your Production Needs

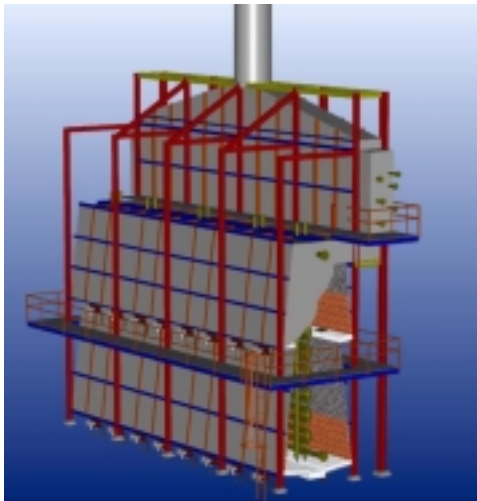
### A DISTINCTIVE DESIGN FOR CRACKING SERVICES

Foster Wheeler's proprietary TERRACE-WALL™ design incorporates slightly sloped radiant section sidewalls and burners at the terrace levels. This distinctive design offers many advantages for petrochemical cracking where the process tubes require uniform, controlled, symmetrical heat.

The multiple-level burners fire upward toward the sloped walls adjacent to the wall refractory, providing a firebox with high re-radiation and predictable gas recirculation. This ensures safe, stable combustion.

Elimination of flame impingement on the tubes is another advantage of the upward firing terrace configuration. This reduces annual operating cost through improved run times.

The TERRACE-WALL™ design can operate under total natural draft without the need for forced air or induced-draft fans. If air preheat is required, the addition of combustion air ducts for forced draft operation is easy and cost effective.



## EDC Cracking Furnace WITH TERRACE-WALL™ Technology

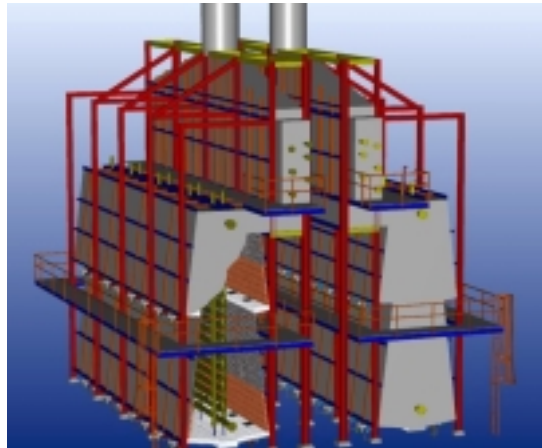
Reflects Foster Wheeler's renowned attention to detail and commitment to the highest quality in design, materials, and fabrication.

- Complete engineering and design
- Custom manufactured in largest shippable modules
- On-site construction advisor and start-up services

### Expandable Capacity, Best Value for Your Vinyl Chloride Monomer Plant

Supplied as a single unit (above) or a pair of units (right), depending on your capacity requirements.

Continue production in one furnace while decoking the other furnace for improved operations and greater productivity.



**FOSTER  WHEELER**

[www.fwc.com](http://www.fwc.com)

### Foster Wheeler Fired Heater Worldwide Offices

#### Canada

FOSTER WHEELER FIRED HEATERS, LTD.  
Calgary, Alberta

#### United Kingdom

FOSTER WHEELER ENERGY LIMITED  
Reading

#### Italy

FOSTER WHEELER ITALIANA, S.p.A  
Milan

#### United States of America

FIRED HEATER DIVISION  
FOSTER WHEELER USA CORPORATION  
Clinton, NJ 908-713-3050

#### Spain

FOSTER WHEELER IBERIA, S.A.  
Madrid